

THE MONITOR



Display Systems International

2214 Hanselman Avenue, Saskatoon, SK S7L 6A4

Ph: (306) 934-6884

Fax (306) 934-6447

Autumn 2003

sales@displaysystemsintl.com

If You Schedule it...

It Will Execute!

Efficient, intelligent and invisible. Display Systems International is releasing an entirely new software program: The Chameleon Background Event Scheduler! The background event scheduler is designed to quietly coordinate and automatically run all of your hardware devices with an adjustable schedule template. The Chameleon is unique because it is the only program of its kind on the market that is capable of efficiently organizing a variety of hardware devices into a system that would otherwise cost thousands of dollars. For example, you may have an older VCR and switcher that you would like to put together with another newer VCR and DVD player. The Chameleon can combine these devices and operate them without any assistance, eliminating the need for extra staff at the office on evenings and weekends just to press play on a video machine or run a VCR. In addition, anyone can use the software with minimal training, because it's created to be user friendly!



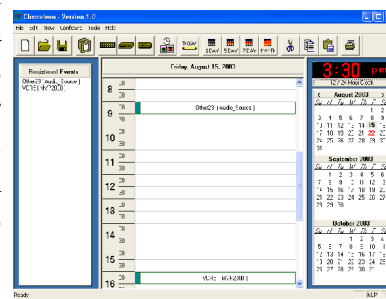
To use The Chameleon, hardware devices are registered into the program, and then events are used to schedule and control your hardware at the exact times and dates you need it to start and stop running. The event will then appear on a main-page schedule under the scheduled date and time. Each event is color coded for quick reference on the schedule.

The schedule has 5 different viewing modes: today, 1 day, 5 day, 7 day and monthly. The program also features a 3-month calendar view for scheduling future events and a digital clock, with hour, minute and second

displays. The clock will display either 24 or 12 hours, as chosen. These two features are always accessible on the right hand side of the screen.

A backup feature in the Chameleon ensures that all program data is always saved. Therefore, once a device is added, or an event is scheduled, it is secure. The Chameleon runs in real time, so it is always doing its tasks when scheduled.

The Chameleon is compatible with dozens of different hardware devices, which all fall into three different categories: Switchers, VCRs/VCR Controllers, and Other Devices. Compatible switchers include the Adtec Lite-ning, as well as various Knox and Leightronix switchers. Compatible VCRs include the D.Co CCV-24, Go-Port Dual Deck, Innotech SpitFire, Panasonic, Rosetta Stone Interface, Tech Electronics CVI-1 and various Leightronix VCRs and controllers. Other devices such as the Adtec MPEG2, Soloist 2 and Audio Source; Video Source; A/V Source; MPEG2 @ disk; and Leightronix MVP2000 are also friendly with the software. Another wonderful feature of the Chameleon is that any device not listed can be custom-programmed into the software by request. Contact your DSI representative today for more information! **D**



The Computer is Down - I work in a busy office, and when a computer goes down it causes quite an inconvenience. Recently one of our computers not only crashed, it made a noise that sounded like a heart monitor. "This computer has flat-lined," a co-worker called out with mock horror. "Does anyone here know how to do mouse-to-mouse?" **D**

Tips and Tech

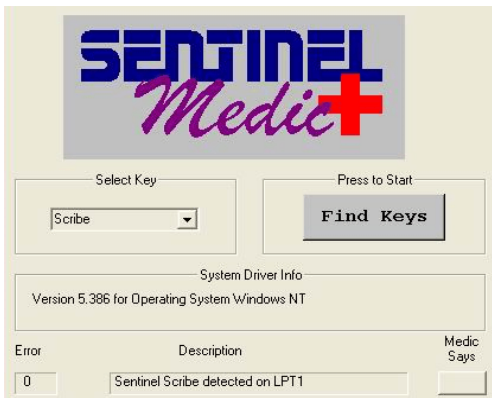
Tips and Tech is a section that offers suggestions to make your pages look more professional, and provides short-cuts for saving time while using the DSI software. This issue highlights the *Sentinel Medic for WIN XP, 2000, or NT*. Sentinel Medic is a requirement to run DSI software under these operating systems. Without this program, (and your key) the software will run in demo mode only. This program comes free with all DSI software, and pretty much installs itself. Once it installs it needs to be configured on your computer.

1) On WIN desktop, click START button. Go to 'Programs', then 'Rainbow Technologies' group, then the 'Sentinel Medic' group and click on **Sentinel Medic application**.

2) A window will pop up. It will ask: "Would you like to install parallel port driver?" Make sure the parallel port driver is selected and click yes/ok.

3) Now you should get the message: "Driver installed successfully. No reboot required." If you do not get this message, repeat step 2.

4) Now the Sentinel Medic is open. Go to 'Select Key' drop down menu. Click on 'Scribe'. Then click on the large 'Find Keys' button.



5) At the bottom you will see the following:

Error and Description sections.

Under each of these headings is a box.

*In the Error box, make sure it reads: 0

*In the Description box make sure it reads:

Sentinel Scribe detected on LPT1

If you do not get this make sure the key is plugged into the parallel port securely.

6) Close the Sentinel Medic. You will not need to do this again. Run DSI software. **D**

Lawyer and a Blonde

A lawyer and a blonde are sitting next to each other on a long flight from LA to NY. The lawyer leans over to her and asks if she would like to play a fun game. The blonde just wants to take a nap, so she politely declines and rolls over to the window to catch a few winks.

The lawyer persists and explains that the game is really easy and a lot of fun. He explains "I ask you a question, and if you don't know the answer, you pay me \$5, and visa-versa." Again, she politely declines and tries to get some sleep.

The lawyer, now somewhat agitated, says, "Okay, if you don't know the answer you pay me \$5, and if I don't know the answer, I will pay you \$50!" figuring that since she is a blonde that he will easily win the match. This catches the blonde's attention and figuring that there will be no end to this torment unless she plays, agrees to the game. The lawyer asks the first question. "What's the distance from the earth to the moon?"

The blonde doesn't say a word, reaches in to her purse, pulls out a five-dollar bill and hands it to the lawyer. Now, it's the blonde's turn. She asks the lawyer, "What goes up a hill with three legs, and comes down with four?"

The lawyer looks at her with a puzzled look. He takes out his laptop computer and searches all his references. He taps into the Air phone with his modem and searches the Net and the Library of Congress. Frustrated, he sends E-mails to all his coworkers and friends he knows. All to no avail. After over an hour, he wakes the blonde and hands her \$50.

The blonde politely takes the \$50 and turns away to get back to sleep. The lawyer, who is more than a little miffed, wakes the blonde and asks, "Well, so what IS the answer!?" Without a word, the blonde

Did you know. . .

Display Systems International was the one of the first to offer a character generator based on a PC? And after 20 years, we continue to lead the market in quality, easy-to-use, PC-based character generators. **D**

Character Generator Trivia Question #2:
*Who has thousands of service centers across North America?
 (Answer below*)*



Display Systems International
Low-Cost High-Performance Character Generators

*Celebrating 20 years of
 serving the cable industry!*

2214 Hanselman Avenue, Saskatoon, SK S7L6A4
 Ph: 306.934.6884 Fax: 306.934.6447
 Email: sales@displaysystemsintl.com

All systems include FREE 3-year warranty!

**Answer: Display Systems International - but with our dependability rate of over 99%
 you may never need one!*

Newest Version Release!

The newest version is available for download! This version ensures that Windows XP now supports contact closures. In order to do this, customers will be provided with additional hardware, for no additional cost, with the purchase of a contact closure. Contact closures allow the software to trigger a switch, which in turn activates a chosen device. For instance, schools find this option useful to synchronize the school clocks with their bells.

This version also includes a few more new features. For instance, in the Scheduler, you are able to view more pages at one time, instead of using the arrow buttons to do so. Also, you are able to turn off the toolbar, wipes, and files windows in the Scheduler.

Here at DSI, we are always looking for ways to improve and update our software. To stay current with our software updates, contact your DSI representative, or visit our website at www.displaysystemsintl.com. Our sales people and technicians will be happy to answer any questions you might have. **D**

DSI On the Road. . .

For information at any time concerning trade shows, vendor days and training seminars, consult Display System International's web site, www.displaysystemsintl.com or give us a call. **D** (306) 934-6884 / email: tanya@displaysystemsintl.com

Speed Limit Oversight

A state trooper noticed a car pattering along at 22 mph. So he turned on his lights and pulled the driver over. Approaching the car, he noticed that five old ladies were inside, and they looked wide-eyed and terribly pale.

The driver pleaded with him, "Officer, I don't understand, I was driving according to the speed limit! What seems to be the problem?"

"Ma'am," the officer replies, "You weren't speeding, but driving slower than the speed limit can also be dangerous."

"I beg to differ, sir, I was following the speed limit exactly: 22 miles per hour!" the old woman said.

The state police officer, chuckling, explained to her that "22" was the route number, not the speed limit. A bit embarrassed, the woman grinned and thanked the officer for pointing out her error.

"But before I let you go, ma'am, I have to ask: Is everyone in this car okay? These women seem awfully shaken," the officer asked.

"Oh, they'll be all right in a minute, officer. We just got off Route 119." **D**

I am interested in receiving information on the following DSI products: (Check all that apply.)

- IBM ELITE GOLD
- IBM ELITE 2000
- IBM TextPro Sr.
- IBM TEBBS
- Please send me a free DSI Demo CD.
- I would like someone from DSI to contact me.
- I would like to receive the Monitor via email.
- Please remove my address from your mailing list.

Please fill out the following so we can serve you better:

Name: _____

Company: _____

Mailing Address: _____

City: _____

State: _____ Zip: _____

Phone#: _____

Email: _____

DSI's Free Support Receives Top Honors from Lima Estates, PA

In this issue of The Monitor, we interviewed Mary Jane Schrader from Lima Estates, a retirement community in Media, Pennsylvania. Lima Estates recently upgraded from the Text Pro Sr to the Elite 2000. Mary Jane is one of five people who use the DSI system at Lima Estates, and she says they have been using DSI's products since September of 1999.

Lima Estates distributes information such as date, time, weather, birthdays, anniversaries, menus, daily and upcoming events, announcements, and "daily diversions" (riddles, quotes, etc.) on their DSI system to their residents. They also use the horizontal crawl to display emergency information. Mary Jane thinks that "the fact that we have so much control over so many features" is one of the Elite 2000's best qualities. She also feels the system gives her the opportunity to make the pages simple or complicated, as time and creativity permit.

We asked Mary Jane what she thought about our support services, to which she replied they are "THE BEST". She says she "appreciates the promptness and clarity of responses through phone and email", and is also very appreciative of the continual free support they have received.

In conclusion of our interview, Mary Jane stated: "We've received many compliments from Lima residents, as well as other retirement communities who have visited us

to see our in-house TV. As you probably know, most of the PA ACTS communities use DSI (at least I think so), but other communities have been quite impressed. We've recommended DSI to two communities that were looking for a good program. We value your continued free support and that has impressed other communities."

Everyone here at DSI would like to thank Mary Jane and Lima Estates for taking the time to answer our questions. Our goal here at DSI is to make our customers happy by providing them with a quality product and available, helpful support staff. We are glad to be able to meet and exceed this at Lima Estates, and we look forward to further business relations with them and all of our other customers. **D**

Psychological Profile

The psychology instructor had just finished a lecture on mental health and was giving an oral test.

Speaking specifically about manic depression, she asked, "How would you diagnose a patient who walks back and forth screaming at the top of his lungs one minute, then sits in a chair weeping uncontrollably the next?"

A young man in the back of the class raised his hand and answered, "He's probably a



Display Systems International, Inc.

2214 Hanselman Ave
Saskatoon, SK S7L 6A4
Canada

Phone: (306)934-6884 Fax:(306)934-6447

email: sales@displaysystemsintl.com

Home page: www.displaysystemsintl.com