

THE MONITOR



Display Systems International
2214 Hanselman Avenue, Saskatoon, SK S7L 6A4

Ph: (306) 934-6884
Fax (306) 934-6447

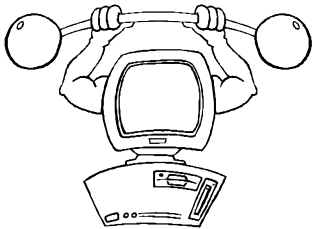
Spring 2002
sales@displaysystemsintl.com

Lower Priced Hardware Upgrades!

More Bang For Less of Your Bucks

It seems that everyone is looking for a deal these days. With our economy still healing from the effects of September Eleventh's tragedy, we here at DSI would like to give our customers a break. Therefore, Display Systems International would like to announce a new price list. We are pleased to release new, lower prices on our top-end systems - the Elite GOLD and Elite 2000. Both have dropped approximately \$600.00 per system.

In addition to our lower prices, we have also upgraded our specs. Last year we advertised a free three-year extended warrantee special towards the end of the year, which was included with all of our hardware. Because of the amazing response we got, it has been decided to make the extended three-year warrantee a



permanent deal. It is one of the newest additions to our software specs. Other exciting new features include a **Pentium 4 Processor with 1.6 GHz, 256 Megs RAM, and a 20 Gig hard drive.**

These features are new only to the Elite GOLD and Elite 2000 display and creation systems. They improve the system's stability, create faster schedules and smoother crawls.

The features of our top-end systems combined with our new price list and improved specs are well worth a look. Contact our company and ask for a salesperson to receive more information, and ask for a free demo CD so you can try the software out for yourself!

For complete specs and prices, please refer to the quick pricing guide for hardware upgrades, printed in the next column. Please note that these are hardware prices only, and software is not included.

Premium System: Typical Configuration for ELITE2000 and ELITEGOLD Creation Systems
IBM Compatible PC, 1.6 GHz Pentium 4 processor, 256 MB RAM, 20 GB Hard drive, 52 X CD-ROM, Windows 98 SE, 32 Meg Graphics Board, 17" VGA monitor, NTSC Video output (IB470), Photo Editing software, current version DSI software loaded and configured (key not included), 3.5" Floppy drive, keyboard, mouse, sound card, powered speakers (2), microphone, UPS battery backup, and single pass color flatbed scanner, and your choice of Network Card or internal modem. \$2450.

Power System with Communications: Typical for ELITE2000 and ELITEGOLD Display Only Systems
IBM Compatible PC, 1.6 GHz Pentium 4 processor, 256 MB RAM, 20 GB Hard drive, 52 X CD-ROM, Windows 98 SE, 32 Meg Graphics Board, NTSC Video output (IB470), current version DSI software loaded and configured (key not included), 3.5" Floppy drive, keyboard, mouse, sound card, UPS battery backup and your choice of Network Card or internal modem. \$1795

Base System with Communications: Typical for TextPro Sr. Creation / Display Only systems
IBM Compatible PC, Celeron 766 MHz processor, 128 MB RAM, 10 GB Hard Drive, 52X CD-ROM, 3.5" Floppy drive, Windows 98 SE, 8 Meg VGA Board, Internal NTSC output, UPS Backup, and choice of a Network Card or internal modem. \$1495.

Base System: Typical for TEBBS System / TextPro Sr. without communications

IBM Compatible PC, Celeron 766 MHz processor, 128 MB RAM, 10 GB Hard Drive, 52X CD-ROM, 3.5" Floppy drive, Windows 98 SE, 8 Meg VGA Board, Internal NTSC output, and UPS Backup. \$1400.

(*Each of the above include free 3 year warrantees.)

Tips and Tricks

Tips and Tricks is a section that offers suggestions to make your pages look more professional, and provides short-cuts for saving time while using the DSI software.



This issue of 'Tips and Tricks' highlights "**Internet Connected Display Pages**".

Internet display pages are the newest addition available with DSI's Elite Gold software. An Internet display page is loaded directly from the Internet to your schedule. This option may be especially helpful for displaying weather pages, which are subject to frequent changes and updates from the Internet, thus, reducing personal interference with schedule pages.

To use, simply locate the site page you wish to display from the web. Copy the URL address, using the Ctrl + C keys on the keyboard. Next, open your schedule in the DSI software where you wish to place the web page, and select the Internet button with the earth graphic on it. A window will come up on the screen. Paste the URL in the space provided. Also, make sure the Log Entry box is checked to enable the page to display. You may now view the web page you have chosen and make alterations to the address(es) whenever you wish. Try lengthening and shortening the "seconds to display", to allow for different viewing times.

A helpful tip when adding Internet pages to your screen schedules, is to make the Text Size **large** in the drop down menus on the top of screen. Increasing the text size allows words to be legible on the screen, where the schedule may be viewed. (It should be noted that text resolution varies from a monitor to a tv screen.) High speed Internet connections are a must when doing this otherwise pages will take too long to load, expiring before they have a chance to be seen. **D**

We would like anyone who has a good idea for our Tips and Tricks section to please get in touch with us and share your idea. If we put it in a future issue of The Monitor, we will give you credit for it. Please call us at 306.934.6884 and ask for Dave. **D**

Getting a Day Off

Smith goes to see his supervisor in the front office. "Boss," he says, "we're doing some heavy house-cleaning at home tomorrow, and my wife needs me to help with the attic and the garage, moving and hauling stuff."

"We're short-handed, Smith," the boss replies. "I can't give you the day off."

"Thanks, boss," says Smith, "I knew I could count on you!" **D**

Refurbished units for sale...

It's that time of year again, when DSI offers customers the opportunity to purchase a perfectly wonderful refurbished computer system. The hard drive has been reformatted and all units cleaned to sparkling, inside and out. Currently we are presenting TEBBS units, fully loaded with internal video converter and software. Units start at under \$1,000. **D**



Thoughts to live By:

- ➔ **Eat a live toad in the morning and nothing worse will happen to you for the rest of the day.**
- ➔ **Nobody cares if you can't dance well. Just get up and dance.**
- ➔ **If you can't beat your computer at chess, try kickboxing.**
- ➔ **If you try and don't succeed, cheat. Repeat until caught. Then lie.**
- ➔ **If you lend someone \$20, and never see that person again, it was probably worth it. **D****

Crafty Millionaire

Before going to Europe on business, a man drove his Rolls-Royce to a downtown NY City bank and went in to ask for an immediate loan of \$5,000.

The loan officer, taken aback, requested collateral. "Well, then, here are the keys to my Rolls-Royce", the man said.

The loan officer promptly had the car driven into the bank's underground parking for safe keeping, and gave him \$5,000.

Two weeks later, the man walked through the bank's doors, and asked to settle up his loan and get his car back. "That will be \$5,000 in principal, and \$20.30 in Interest," the loan officer said. The man wrote out a check and started to walk away.

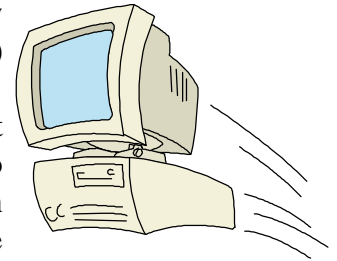
"Wait sir," the loan officer said, "while you were gone, I found out you are a millionaire. Why in the world would you need to borrow \$5,000?"

The man smiled. "Where else could I park my Rolls-Royce in Manhattan for two weeks and pay only \$20.30?" D

Production Services

Display Systems International is now offering production services. These services are available on monthly or daily contracts. A long term contract offers the construction of all your creation pages, and arranges them in a schedule. By simply providing us with the graphics that you would like to use and the text that you would like on the page, along with any other specific guidelines, we will make your schedule and maintain the pages for you. Start/Expiry times for the pages (if needed) should be given as well.

Quick and easy Internet viewing is provided, at no extra cost to the services, in order to ensure complete satisfaction of the created schedules.



The contracts provide for a standard of 40 pages created per month for a \$600 monthly fee. This includes all high speed Internet data transmissions, and of course the schedule production. Modem connections cost an additional \$50 per month. If more than 40 pages are needed in a month, additional pages are created at the rate of \$20 per page. If you only need a few creation pages at a time, the cost is \$20 per page, as well. Contact a DSI representative for any questions/comments regarding our new production services. D

If you would like to hear more about DSI products, please fill in this form and send, fax or email it to DSI at 203 Mallin Crescent, Saskatoon, SK, S7K 7W8, Canada Fax#: 306.934.6447 sales@displaysystemsintl.com

I am interested in receiving information on the following DSI products: (Check all that apply.)

- IBM ELITE Gold
- IBM ELITE 2000
- IBM TextPro Sr.
- IBM TEBBS
- Please send me a free DSI Demo CD.
- I would like someone from DSI to contact me.
- I would like to receive the Monitor via email.
- I would like to be removed from the DSI mailing list.

Please fill out the following so we can serve you better:

Name: _____

Company: _____

Mailing Address: _____

City: _____

State: _____ Zip: _____

Phone#: _____ Email: _____

Joke of the Day

A farmer and his pig were driving down the road when a cop pulled him over. The cop asked the farmer, "Didn't you know it is against the law to ride with a pig in the front of your truck?"

The farmer replied, "No, I didn't know that." The cop asked the farmer where he was going and he said, "To Memphis".

The cop said, "I will let you off the hook this time if you promise to take the pig to the zoo when you get to Memphis." So the farmer promised he would.

Several days later the cop spotted the farmer with the pig driving down the road and he pulled him over again. The cop said "I thought I told you to take this pig to the zoo when you got to Memphis."

The farmer replied, "I did and we had so much fun, I taking him to Kings Island now". **D**



© CREATIVE MEDIA SERVICES Box 5955 Berkeley, Ca. 94705

DSI is On the Road...

March 11-12 Edgar and Richard were at the North Central Cable Show in Minneapolis, MN. Together they greeted many new friends, and had a chance to touch base with previous acquaintances. The show was an overall success! Thanks to those involved.



The SCTE trade show is from June 4-6, held in San Antonio, TX this year. Rob and Richard will be representing Display Systems at Booth number 619.

For information at any time concerning trade shows, vendor days and training seminars consult DSI's web site,

www.displaysystemsintl.com. **D**

Would you like to advertise your business in The Monitor? Reasonably priced Advertising that reaches thousands of local/corporate Cable and Telecommunications companies four times a year! To place your ad today contact Tanya at Display Systems International. **D**(306)934-6884 / email: tanya@displaysystemsintl.com



Display Systems International is proud to be an earth friendly company, actively involved in paper, plastic and beverage container recycling programs. **D**

