

Spitfire Universal VCR Controller

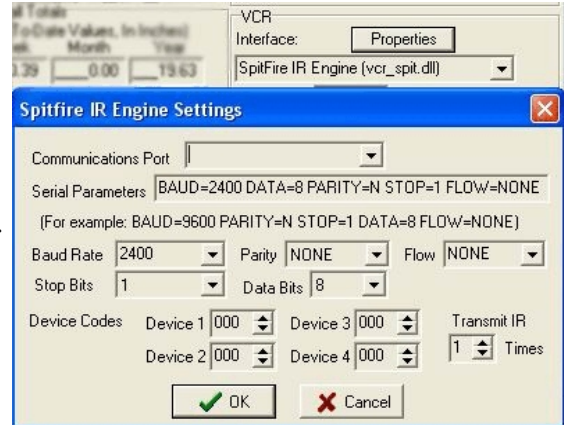
In order to use a VCR with the DSI Software, you must first setup the software. To use this option, you must purchase an optional VCR controller to use with the DSI software. Please contact a DSI sales representative for more information.

Installing Spitfire Controller Files

- ☞ Insert the CD-Rom into your drive. Browse the CD-Rom to the “x:\Spitfire VCR Controller” folder.
- ☞ Run the “spitfire.exe” file and follow the on screen instructions.

Setting up the VCR

- ☞ Click on the **Interfaces** tab in the Configuration.
- ☞ Click on the space below VCR Interface and a drop down window will appear.
- ☞ Select the appropriate device driver (DLL) for the VCR controller you are using.
- ☞ If the Properties box is not greyed out, then click on it.
- ☞ Select the COM port which the VCR controller is plugged into.
- ☞ Make sure the settings are correct for VCR controller you are using. Set the properties for your VCR controller according to the below table.



VCR Controller Interface	Baud Rate	Data	Parity	Stop Bits	Flow Control
Spitfire Remote	2400	8	None	1	None

- ☞ To change the settings, click on the drop down menu and select the correct value. For Windows XP machines, select CTS/RTS for the hardware value.
- ☞ For the Spitfire Remote Interface, enter the Device Code for your VCR in Device 1.
- ☞ Click on **OK** to save these settings and exit the Configuration.