

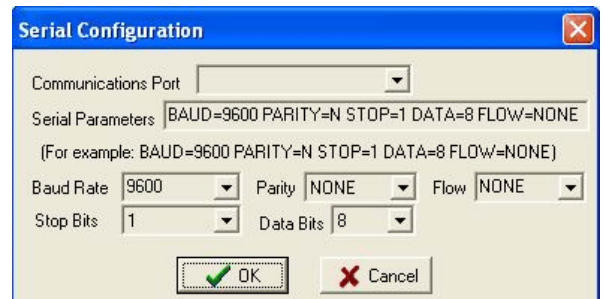
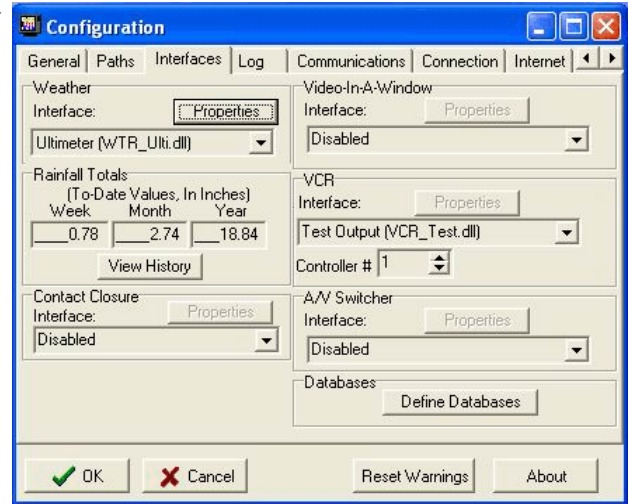
Weather Station Configuration

Weather station configuration is a necessity when setting up a DSI system to display local weather information. The following guide will describe how to set up your configuration to properly work with your particular weather station. **Note: Please read the section of this guide concerning your particular weather station before performing any of the steps mentioned here.**

Configuring the DSI95 for a Local Weather Station

This section assumes that the weather station is properly connected as per instructions included with the weather station and later in this guide. Before you can display information from a local weather station, you must configure the DSI95 software. To configure the software follow these steps:

- ✎ If you are displaying pages press **Escape** to get to the Master Menu.
- ✎ Click on **Configuration** in the red Utilities section of the Master Menu.
- ✎ Click on the **Interfaces** tab at the top of the Configuration window. Locate the Weather Station area.
- ✎ Click on the space below **Interface:** in the Weather Station area. A drop down menu of the available weather stations will appear.
- ✎ Select your weather station from the list by clicking on the weather station name that you have.
- ✎ Click on the Properties Button just above the Interface drop down menu.
- ✎ Select the Com port that you by clicking on the drop down menu and highlighting the Com port.
- ✎ Set the properties for your weather station according to the below table and the instructions which follow:



Weather Station	Baud Rate	Data	Parity	Stop Bits	Flow Control
Davis Weather Monitor II	2400	8	None	1	None
Heathkit	9600	8	None	1	XON/XOFF
Ultimeater	2400	8	None	1	Hardware
Texas Weather Instruments	19200	8	None	1	XON/XOFF
Davis Vantage Pro	19200	8	None	1	None
Weather Port	9600	8	None	1	XON/XOFF

- ✎ To change the settings, click on the drop down menu and select the correct value. For Windows XP machines, select CTS/RTS for the hardware value.

Troubleshooting Weather Stations

Davis Weather Station

- ✍ More troubleshooting information specific to the Davis Weather Station can be found in the Davis Weather Station manual in chapter 8.

Texas Weather Instruments

- ✍ First set up the Texas Weather Instruments weather unit as outlined in its manual. After it is setup with all instruments attached, continue reading below.
- ✍ Set the Baud Rate on the Texas Weather Instruments Weather Station as follows.
 - ✍ Press **Select** and **Average** at the same time on the Texas Weather Instruments Weather Station panel.
 - ✍ Press **Select** 3 more times to enter the Baud Rate Setting.
 - ✍ Press **Maximum** and **Minimum** to adjust the Baud Rate to 19200. **Note:** the display will only show 19.2.

Ultimeter

- ✍ Plug the telephone jack connector into the right side of the Temp & Wind Only base unit.
- ✍ **NOTE: When you connect the power to the Temp & Wind Only base unit (with the computer cable plugged into the Temp & Wind Only base unit), immediately watch the LCD screen of the base unit. If something starts to display on the LCD screen, but it goes blank right away, immediately unplug the power to the base unit. Unplug the computer cable (telephone jack) from the side of the Temp & Wind Only base unit. Then try connecting the power again. If the LCD screen comes on and keeps displaying, there is a problem with your computer cable. Do not use that computer cable. If there is a problem with the computer cable and the power is left on to the Temp & Wind Only base unit, it can burn out the base unit. If the computer cable is plugged in and the power is applied and the LCD continues to display information, then everything is OK, and you can proceed.**