

Display Systems International Inc.©

Presents...



Low-Cost High Performance Program Guides

- **GOLD LineUp**
- **2000 LineUp**
- **TextPro Sr. LineUp**
- **TEBBS LineUp**

Electronic Programming Guide Manual



Display Systems International, Inc.©
www.displaysystemsintl.com

www.displaysystemsintl.com

support@displaysystemsintl.com

LineUp Passive Programming Guide Manual

Cable TV Lineup - August 3, 2006				
7:04 PM	7:00 PM	7:30 PM	8:00 PM	8:30 PM
FOX 5	That '70s Show	Malcolm in the Middle	That '70s Show	Friends
ESPN 6	Poker - Circuit Championship		X Games 12	
tbs 7	Home Improvement	Home Improvement	Seinfeld	Seinfeld
8	Eyewitness News at 5	CBS Evening News	Eyewitness News at 6	Insider
9	Al Rojo Vivo con María Celeste		Sala de Parejas	Noticiero Telemundo
10	Maya & Miguel	Cyberchase	Newshour with Jim Lehrer	
CNN 11	Nancy Grace		Glenn Beck	
SHOWTIME 12	In the Army Now			Sky Captain and the
abc 13	Action News @ 5pm	ABC's World News with	Action News @ 6pm	Action News @ 6:30pm

Table of Contents

Limited Warranty	2
Warranty Procedure	2
Introduction to the Dongle Key	3
Hardware Setup	4
Connecting Hardware	4
Installing LineUp Software	4
Customer Service & Support	4
Using LineUp Software	5
LineUp Client	5
LineUp Configuration	6
General Tab	6
Messages Tab	7
Channel Tab	8
Colors Tab	9
Display Tab	9
Running LineUp	10

(1)

Limited Warranty

Display Systems International, Inc. ("DSI") warrants this product against defects in material and workmanship for a period of three years from the date of purchase. This warranty applies only to products and components supplied by DSI which can be identified by the DSI trademark, DSI trade name or DSI logo affixed to them. DSI does not warrant any products not supplied by DSI.

During the warranty period, DSI will repair (or at it's option replace), at no charge, the DSI product or any DSI supplied components that prove to be defective, provided the DSI product is returned to an authorized DSI Service Center.

This warranty does not apply if the product has been damaged by accident, abuse or misapplication, or as a result of service or modification by other than an authorized DSI Service Center.

This product is provided "as is" without warranty of any kind, either expressed or implied, including, but not limited to the implied warranties of merchantability and fitness for a particular purpose. The entire risk as to the quality and performance of this product is with you. Some states do not allow on limitations on how long an implied warranty lasts, so the above limitation may not apply to you.

In no event will DSI be liable to you for any damages, including any lost profits, lost savings, or other incidental or consequential damages arising out of the use or inability to use such a product even if DSI or an authorized DSI Dealer has been advised of the possibility of such damages, or for any other claim by any other party.

This warranty shall not be applicable to the extent that any provision of this warranty is prohibited by any federal, state (provincial) or municipal law which cannot be preempted. This warranty gives you specific legal rights, and you may also have other rights which vary from state to state.

Warranty Procedure

In order to obtain warranty service, you must obtain a RETURN MERCHANDISE AUTHORIZATION (RMA) number from Display Systems International, Inc. either by calling or by writing to DSI at the location specified below. When obtaining such a number, DSI will provide you with the service center nearest to you. Return the DSI product to that service center with your name, address, telephone number and a description of the problem and proof of date of purchase (such as a bill of sale), transportation charges pre-paid. No equipment will be accepted unless it has an (RMA) number quoted on the outside of the package.

Display Systems International, Inc.

2214 Hanselman Ave
 Saskatoon, Saskatchewan S7L 6A4
 Phone:(877) 934-6884
 Fax:(306) 934-6447
 support@displaysystemsintl.com

(2)

Dongle Key

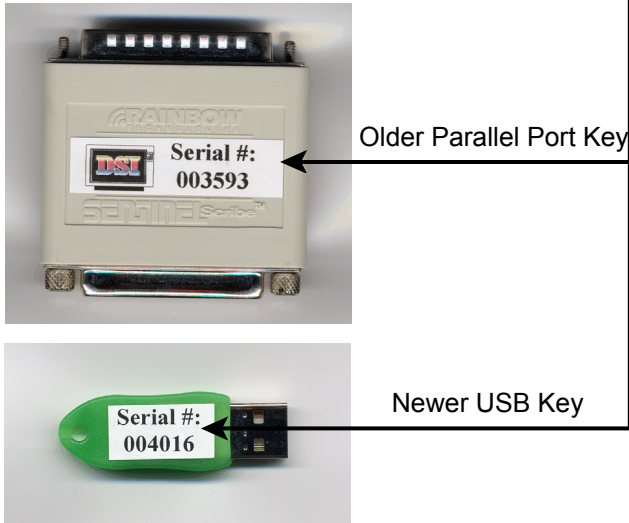
All of Display Systems International, Inc.'s software is enabled with a Dongle key as illustrated below. This is a physical device that attaches to the parallel port or USB port on your computer.

The Dongle keys are programmable Security & Software Activation Devices that are customized for each software package sold. Each key comes with a serial number issued by DSI. All of the relevant hardware specifications for the system are recorded using the serial number as a reference.

❖❖Without installing and enabling the Dongle, the DSI software will run in demo mode.❖❖

DO NOT LOSE THE KEY!

Full replacement value of the original software will be required to replace this Dongle resulting from misplacement or malfunction due to tampering.



(3)

Hardware Setup

When unpacking the system, save the boxes and packing material in the event the unit has to be returned for repair or replacement. No system will be accepted for repair or replacement unless returned in original packaging or equivalent. To return anything to DSI you must first get an RMA# from DSI.

Connecting Hardware:

- Connect the Keyboard and Mouse to the appropriate slots on the system (usually indicated by a picture of a keyboard/mouse and/or color coded).
- Your system comes with an internal digital convertor where you can connect the NTSC video output to a Modulation system and the DB15 VGA output to a Monitor.
- If you purchased an optional external Digital Convertor (usually a CorioScan), unpack and install this convertor (instructions are included with the convertor).
- Connect the Power Supply cord to the back of the system and the other end into a standard power outlet, power bar or a UPS Back-up if supplied.

Installing LineUp Software on Your Machine

The LineUp software will run on computers that use operating systems such as Windows XP/2000. Full systems purchased from DSI will use the Windows XP operating system. First, install the character generator software and then install the LineUp software. Please refer to the Character Generator Quick Start Manual to install the CG software.

- It is recommended to **NOT** attach the DSI dongle key before installing the software. (If you purchased a complete system, all software is already installed.)
- Clicking on the Install DSI Software will initiate the DSI Setup Factory.
- Close all other programs before continuing with the installation.

To Install the LineUp Passive Programming Guide:

- 1) From the Auto-Run, select Install Software.
- 2) Click on the LineUp Software.
- 3) Follow all on screen instructions.

❖❖For further assistance call the DSI technical support Staff❖❖

Customer Service & Support

Sales:

To order additional products or upgrades please call your sales representative at 877-934-6884, fax 306-934-6447 or e-mail: sales@displaysystemsintl.com.

Support:

If you have any questions or problems when using any of the DSI products, you can contact our customer support staff at 877-934-6884 or e-mail: support@displaysystemsintl.com. When calling please be near the system in question with the serial number at hand. The serial number can be found by pressing [Alt-I] from the main menu of the DSI program.

(4)

Using the LineUp Software

To access the LineUp software from the desktop of Windows, click on the Start button, then Programs, then LineUp, You will have 3 programs: The LineUp Client, and the LineUp Configuration, & the LineUp.

LineUp Client

The LineUp Client program is required to supply the LineUp software with the TV listings information. The LineUp Client **MUST** always be running so that the LineUp software has access to the latest TV program updates.

- **Update Server:** This address is pre-set and should not be changed without first contacting DSI technical support.

- **Update Channels Button:** When you use LineUp for the first time, click the Update Channels button to receive all authorized channels for your system.

- **Last Full Update:** Click the Now Button to retrieve all the TV listings information. You can watch the status of the update at the bottom of the window.

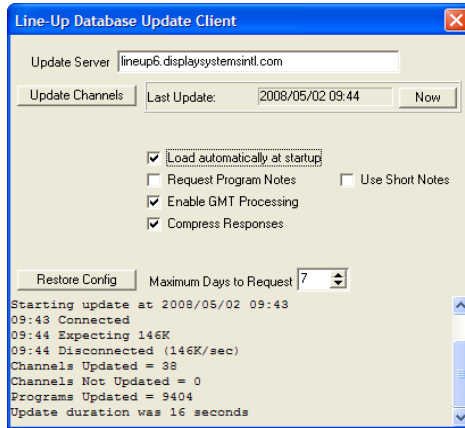
- **Load Automatically at Startup:** This must be checked to ensure that the LineUp client will start after the computer is rebooted.

- **Request Program Notes:** Check this box to download additional information about each program.

- **Use Short Notes:** This option will speed up the download of the Program Notes when selected.

- **Maximum Days to Request:** This setting tells the LineUp Client to download 7 days worth of TV listings. Default setting is 7 days. Can be adjusted from 1 to 14 days.

- **The bottom portion of the LineUp Client window** gives you information about which specific channels are being updated, how many channels are updated and the duration of the update.



(5)

LineUp Configuration

The LineUp configuration menu is located in the Windows Control Panel. You can access this menu by clicking on the Windows Start button, then Settings, and then the Control Panel. Then, click on the LineUp Configuration.

The configuration menu is split into 6 different tabs: General, Messages, Channels, Colors, Display and Advanced.

General Tab

- **Banner Message:** Displays a static message at the very top of the listings.

- **Internet Password:** This password will be set by default. If you don't have a password, please contact DSI technical support to obtain it.

- **Default Time Shift:** Adjust all the program times by entering a value here. Default value is 0:00.

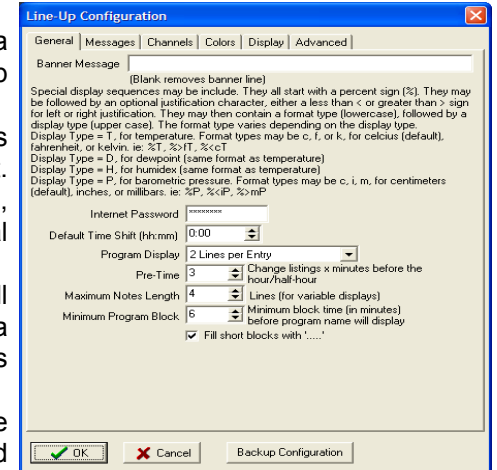
- **Program Display:** Tells the LineUp software how you would like your TV listings displayed.

- 1 Line per Entry: shows only program name.
- 1 Line & Notes: displays program name and notes in one line.
- 2 Lines per Entry: shows only program name with 2 lines of space.
- Variable Name Only: Will show only the program name and will use however many lines need to display all program name information.
- Variable Name + Notes: This option will display the program name and all the notes for each program, using however many lines required.

- **Pre Time:** Change listings information x minutes before the hour/half-hour.
- **Maximum Notes Length:** used with the variable display settings to show how many lines of notes to display.

- **Minimum Program Block:** omits the program name if time block is to short.

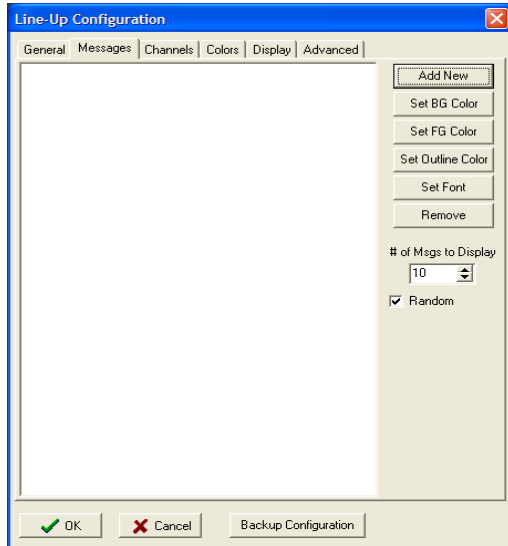
- **Fill Short blocks with "...":** if program name is omitted, you can fill time block with "..."



(6)

Messages Tab

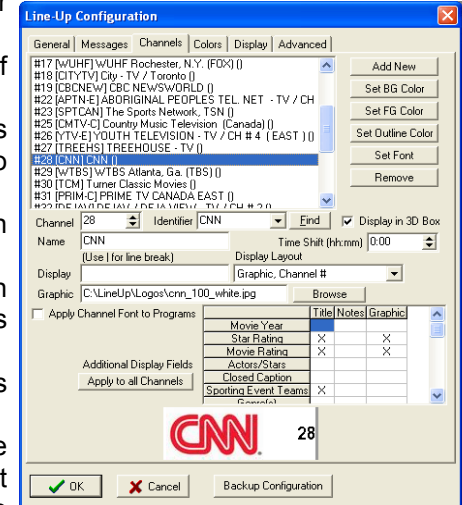
- Add New: Will open the Message Properties setup window.
 - i) Text Message: Simply type your message that you would like.
 - ii) Graphical Message: When you select this, you are able to insert your own graphic (.jpg or .bmp file) as your message. Will appear at the end of the listings.
 - iii) Graphical Terminator: When you select this option, you are able to insert your own graphic (.jpg or .bmp file) as your message. Will appear at the end of the listings.
- Set BG Color: Use this option to set the background color of your message.
- Set FG Color: Use this option to set the foreground color (of the text) of your message.
- Set Outline Color: used to set the color of the outline for text.
- Set Font: Use this to change the font of your message.
- Remove: When a message is selected, click on Remove to delete an existing message.
- # of Messages to Display: set how many messages you would like to display in your listings. You must set this to at least 1 message to have any messages shown.
- Random: Check this box if you have a number of messages that you would like to display, without any pre-set order.
- To Edit an existing message, double click on the message.



(7)

Channels Tab

- Add New: Click on this button to add a channel to the listings.
- Set BG Color: Sets the background color of your channel.
- Set FG Color: Sets the foreground color (of the text) of your channel.
- Set Outline Color: Sets the color of the outline for text.
- Set Font: Changes the font of your channel only, not listings.
- Remove: When a channel is selected, click on Remove to delete the channel.
- Channel: Use the Up/Down arrows to assign a number.
- Identifier: Click the drop down arrow to see a list of channels that you can add.
- Display in 3D Box: Check this box to get a 3D look.
- Name: By default, this will be filled in for you when you select the proper channel in the Identifier menu.
- Time Shift: Adjust program times by entering a value here for only the selected channel.
- Display: Type in the text that you would like to display. ie. Use the call letters of the channel. This is an optional field and can be left blank.
- Graphic: Click the browse button to select the corresponding graphic logo of the channel. Graphics are located in the C:\LineUp\Logos folder.
- Display Layout: Changes how the graphic will appear.
- Apply Channel Font to Programs: Checking this box will use the font specified in the Colors tab for specific program types. ie: Kids programming would be different than regular programming.
- Additional Display Fields Table: Use this option to view movie year, movie star rating and other extras as part of your program title, or as part of your notes. You can also select if you want the option to appear as a graphic (only valid for Star Rating, Movie Rating & Closed Caption).



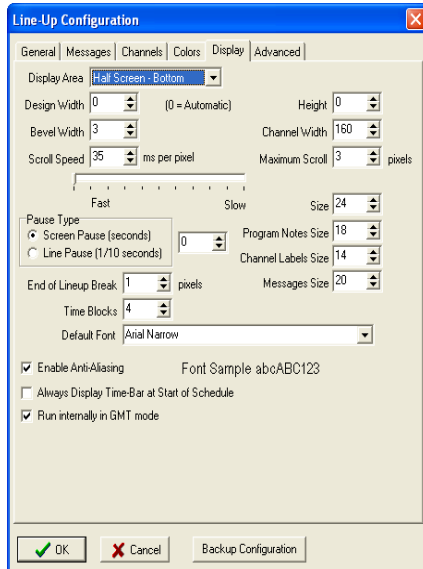
(8)

Colors Tab

- Set Name: Change the name associated with a color. Note: you can not change the names of the first 5 entries as they are system headers.
- Set BG Color: Use this option to set the background color of your header.
- Set FG Color: Use this option to set the foreground color (of the text) for your header.
- Set Outline Color: used to set the color of the outline for text.
- Set Font: Changes the font of your program category. ie: Kids
- Associations: While on a specific category, or header, click on Association. Enter the names of programs that are to be associated with this display setting here. One program per line.

Display Tab

- Display Area: Select your preference for how you would like the LineUp to appear. Choose between Full Screen, Half Screen Bottom, Half Screen Left, Half Screen Top, and Half Screen Right.
- Design Width: Entering a value here will set the width of the LineUp display. An example would be 800 pixels (to correspond to the 800x600 resolution). Leaving this value at 0 will set the width automatically.
- Height: Entering a value here will set the height of the LineUp display. An example would be 600 pixels (to correspond to the 800x600 (resolution). Leaving this value at 0 will set the width automatically.
- Bevel Width: Adjusts the separation of the time slots and programs. Default is 3.
- Channel Width: Adjusts the width of the channel column.
- Scroll Speed: Sets the speed of the guide. The lower the number, the faster the scroll speed.



(9)

- Maximum Scroll: This number is set in pixels. The higher the number, the faster the movement of the scroll. Use the Scroll Speed and this setting together to adjust your final scroll speed.
- The Slider Bar: contains preset Scroll Speed and Maximum Scroll settings that you can use. Drag the slider to the desired area of speed.
- Size: Adjusting this value will change the entire size of the display. Reasonable settings here would be 20 and higher.
- Screen Pause: This value is in seconds and will pause the scroll. A setting of 0 will have no pause.
- Line Pause: This value is in 1/10 seconds and will pause after each channel (or line). A setting of 0 will have no pause.
- Program Notes: Will adjust the size of the text used for the notes associated with a program. This must be used in conjunction with settings *1 Line + Notes*, or *Variable Name + Notes* found under the **General Tab**.
- Time Blocks: Enter the number of time columns that you wish to display. A setting of 3 will display 1½ hours of TV listing information.
- Channel Label Size: Set the text size of the labels for your channels. If you are using graphic logos, this setting will have no effect.
- Messages Size: Set the text size of your message.
- Default Font: Select the font to display your TV listings in.
- Anti-Aliasing: Smooths the edges of your fonts.
- Always Display Time-Bar at Start of Schedule: The time bar will appear after each cycle when checked.

Running LineUp

Now that you have setup the channels and customized your display, you can run the LineUp software to start showing your TV listings. To do a quick test of your settings, follow these steps:

- a)Click the Start button, Programs, LineUp, and LineUp.
- b)To stop the display, press the Alt+F4 buttons together.

To Run the LineUp with the DSI Software:

- a) Open your DSI Character Generator Software.
- b) From the Main Menu, click on Configuration.
- c) On the General Tab, check the box next to Display LineUp on Schedule Display. This will automatically run the LineUp software when your schedule starts.

Note: Make sure that if you are running ½ screen configuration of LineUp that you create your display pages accordingly to ½ screen size.

(10)