

# The Monitor



**Display Systems International**  
203 Mallin Crescent, Saskatoon, SK S7K 7W8

Ph: (306) 934-6884  
Fax (306) 934-6447 sales@displaysystemsintl.com

October 15th, 1998

## Anti-Aliasing - What It is and Why it is Important.

### Saskatoon, SK Canada

**A**nti-Aliasing is a means of making characters appear smoother along the edges. In particular, anti-aliasing is most apparent on large fonts on a screen. The anti-aliasing process involves filling in the jagged edges that appear on rounded characters with different colors between the text color and the color of the background.

The effect makes the font look much smoother. For using large fonts, anti-aliasing is the difference between a page that looks professionally done and one that looks like the font is poor in quality. For users who use large fonts and desire higher text quality on these large fonts, anti-aliasing is a definite advantage.

There are however, some reasons not to use anti-aliasing of fonts on DSI systems. The first reason is blinking text. If you have text set to blink on a page, the areas of the font that are anti-aliased will not blink because they are a different color than the majority of the letters. What results is an outline of close to the original color that does not change when the blink occurs.

Anti-aliasing may not be desirable if you are using one of the new multi-channel systems from DSI. The manner in which the anti-aliasing takes place uses memory and processor time which is already being used intensively for the multiple channels.

Another reason that users may not want to use anti-aliasing is the use of horizontal crawls. The horizontal crawl on the Windows 95 version of the software is much smoother in its travel across the screen. With anti-aliased fonts the horizontal crawl become much more jerky and hard to read.

The last reason not to use anti-aliasing is if the fonts that you are using are fine or thin (having fine lines

and/or decorations). Some of these fonts will not appear if anti-aliasing is enabled.

Unfortunately, there is no means of selecting only specific fonts or areas of the screen to use anti-aliasing. As such, if anti-aliasing is to be used, it will be enabled on the entire system and for all fonts.

Because of the importance of anti-aliasing and the limited use of the horizontal crawl, blink features and no thin standard Windows fonts DSI is installing and enabling anti-aliasing on all systems that are being sent out. If you have recently purchased a system from DSI and will be using blinking text, a horizontal crawl, a fine (thin) font (that was not included with the system) or have multiple channels, you may want to turn off the anti-aliasing. □

### DSI on the Road

Display Systems International will be attending several trade shows over the next 6 months. The next show is the Mid America Show which runs from October 13th through the 15th.

We are also planning to attend the SCBA show in February of 1999. Several other shows are being looked at for the 1999 calendar year. If there is a particular show that you attend on a regular basis let us know. □

### Also in this Issue:

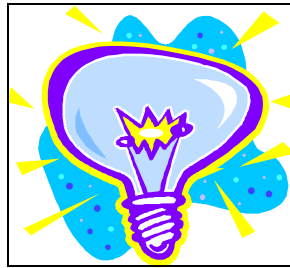
Tips and Tricks .....	2
Weather Bank Information .....	2
DSI Biography .....	3
Product Development .....	3
Video Contest .....	4

## Tips and Tricks

**T**ips and Tricks is a section that may help you to create pages and schedules that offer a more professional look and feel or are ways of doing things in an easier fashion.

The first tip is to use the new migrate button on the Windows 95 version of the products. The migrate button can be found in the scheduler. This button will take a Windows 3.1 product schedule (and pages) and convert it to the Windows 95 product. It puts all the pages, graphics and the schedule in the new directory that you specified. This is also useful if you are creating schedules for multiple locations as you can migrate all the pages and graphics into new directories for more simplified file management. To use the migrate feature, load the schedule that you wish to migrate. Click on Migrate in the Scheduler. Select the folder and type in a new schedule name (if needed) to save the migrated schedule to.

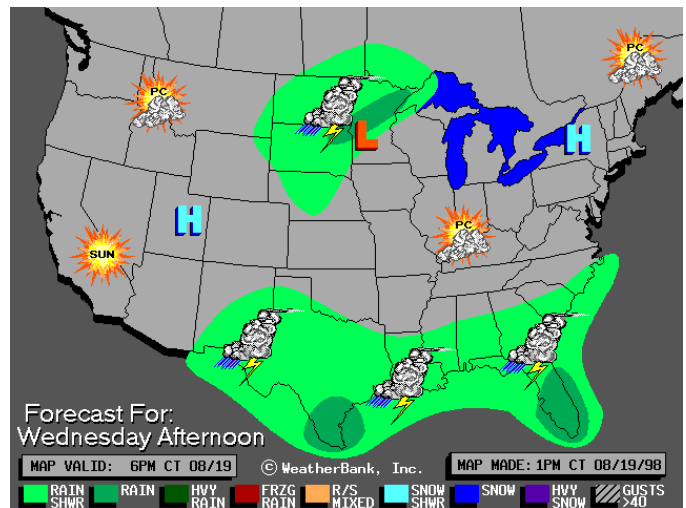
This next tip concerns people using weather stations. The page time before a page with weather information will display for a longer time than it is actually set for. The first thing to try is to use only some weather information on a single page. As only so much information can be looked at by viewers during a given time, splitting weather information into a couple of pages will enable viewers to take in all the information. This also will lower the amount of load time for the weather pages. Another trick is to lower the display time for the page preceding the weather page. This will make the display time more consistent. A third way to lessen this problem is to use a high speed weather station like the Texas Weather Station from DSI. □



We would like anyone who has a good idea that they would like to share with others to let us know what your idea is. If we put it in a future issue of The Monitor, we will give you credit for the idea. Call us and let us know your idea. Our phone number is 306-934-6884 and ask for Richard. □

## Weatherbank Information Available from DSI

**W**eatherbank information is proudly being offered by Display Systems International. DSI has recently been authorized to offer Weatherbank information services to our customers at a reduced rate. The Weatherbank information services are for users of the ELITE2000 and ELITEGOLD. The service is called WeatherBrief FTP service, and offers electronic transmission of information via FTP Internet service. The information can be sent from Weatherbank at a pre-determined interval or else can be retrieved from the FTP site.



Included in the Weatherbank system is a series of weather maps that include precipitation forecasts, temperatures (current, high and low) as well as satellite imagery for storms and hurricanes. Doppler radar imagery is available for many localities. Specialty maps also can be found.

Prices are set up with a more substantial discount for the first three months and then a limited discount for the balance of the contract. The contract is for two years. Months 1-3 are \$99 per month and Months 4-24 are \$129 per month.

Text information is also included in the WeatherBrief FTP system and while it cannot automatically be used, by creating pages using the ASCII Import button, this information can be displayed for your viewers. In the future, Text Archives will be able to be read in and pages created with the information using the database features of the ELITEGOLD. □

## Biography Corner

**M**r. Richard Haubrich is the staff member we are looking at in this issue. Richard has been with DSI for about three and a half years.

Born: Gravelbourg, Saskatchewan

Education: Bachelor of Education (English, Mathematics) (University of Saskatchewan)

Interests: Sports, camping, and travel.

Career Goal: To expand DSI equipment use by specializing to specific markets within the cable television and closed circuit television field.

DSI Responsibilities: Newsletter supervision and Editing. □

“With my VCR I can tape a show on one channel while watching a show on another channel.”  
 “That’s unbelievable!”  
 “Yeah those machines are really getting high tech.”  
 “No, that you can find two shows you want to watch!” □

## DSI Compiling Electronic Manual

**D**isplay Systems International is currently compiling an interactive manual that will allow users to navigate the manual without having to load different files. The updated manual is being converted into PDF form and links to the different sections are being compiled. When done viewing a particular part of the manual, users will be able to click on a "Home" button to return them to the readme file that is opened when the View Guides button is clicked on in the main menu. The manual guides will be installed with the software on the hard drive in order to ensure that they will always be available. The PDF Reader which is necessary to view and navigate the manual files is included on the CD ROM. By double clicking on the ACROREAD.EXE file on the CD-ROM, the necessary files for the reader are installed.

If you have any suggestions for the manual including the organization of the manual or any section on which you would like to see more detail, please contact Rob at 306-934-6884. □

## DSI Systems - An Increased Value

**D**isplay Systems International has recently decided to include all the graphics libraries with the Windows 95 versions of the TextPro Sr. and TEBBS. The number of images in these libraries is approximately 900 images. The images are contained in separate files. Each file is in a folder that describes the contents such as Food, Events or Scenery. The images are usually photo style images and give the TextPro Sr. pages a more polished look.

For new ELITE users, DSI offers a free CD-ROM of images. There are approximately 6000 images on the CD and they cover almost any type of image that you could ever want to use.

A series of new demo schedules have also been created for the Windows 95 versions. The new demo schedules demonstrate the different capabilities of the products. The pages also explain the capabilities of each of the products. The demo schedules will only be available on CD-ROM.

Even with the additional graphics included, the TEBBS software is \$600.00 and the TextPro Sr. is \$795.00. On hardware systems, the TEBBS and TextPro Sr. are now available with anti-aliasing and an internal VGA converter. This converter offers a high quality video output. The price, with this new converter, for the TEBBS system is still under \$2000 and for the TextPro Sr. is under \$2500. □

## DID YOU KNOW?

Display Systems International offers an InterActive product for use in the Real Estate and Advertising Markets. The InterActive can even be used for office information in high rise offices. It also has the capability of printing coupons. Typical locations include universities, hotels, airports, and shopping centers. The InterActive System uses a text editor that is very similar to the text editor for the ELITE2000 and can load ELITE2000 pages and schedules. The InterActive demo is now on the demo CD with all of the other DSI products. □

## Microsoft vs. GM

At a recent computer expo (COMDEX), Bill Gates reportedly compared the computer industry with the auto industry and stated: "If GM had kept up with technology like the computer industry has, we would all be driving twenty-five dollar cars that got 1000 miles to the gallon."

In response to Bill's comments, General Motors issued a press release stating (by Mr. Welch himself):

If GM had developed technology like Microsoft, we would all be driving cars with the following characteristics:

1. For no reason whatsoever your car would crash twice a day.
2. Every time they repainted the lines on the road, you would have to buy a new car.
3. Occasionally, your car would die on the freeway for no reason, and you would just accept this, restart and drive on.
4. Occasionally, executing a maneuver such as a left turn, would cause your car to shut down and refuse to restart, in which case you would have to reinstall the engine.
5. Only one person at a time could use the car, unless you bought "Car95" or "CarNT." But then you would have to buy more seats.
6. Macintosh would make a car that was powered by the sun, was reliable, was five times as fast, and twice as easy to drive, but would only run on five per cent of the roads.
7. The oil, water temperature and alternator warning lights would be replaced by a single "general car default" warning light.
8. New seats would force everyone to have the same size butt.
9. The airbag system would say "Are you sure?" before going off.
10. Occasionally for no reason whatsoever, your car would lock you out and refuse to let you in until you simultaneously lifted the door handle, turned the key, and grabbed hold of the radio antenna.
11. GM would require all car buyers to also purchase a deluxe set of Rand McNally road maps (now a GM subsidiary), even though they neither need them nor want them. Attempting to delete this option would immediately cause the car's performance to diminish by 50% or more. Moreover, GM would become a target for investigation by the Justice Department.
12. Every time GM introduced a new model, car buyers would have to learn how to drive all over again because none of the controls would operate in the same manner as the old car.
13. You'd press the "start" button to shut off the engine.

□

### Video Contest

Display Systems International is holding a contest for users of our products. Cash prizes are up for grabs.

To enter:

1. Make a tape of your schedule as seen by viewers in your cable system. You need to tape approximately 15 minutes to 1/2 an hour of your schedule.
2. Include a note with the tape with your name, address, company name, the date the tape was made, and the serial number for your creation system. (Press ALT-I at the main menu to get the serial number).
3. Send the tape to:

Display Systems International Tape Contest  
2210 Hanselman Ave.  
Saskatoon, SK S7L 6A4  
Canada

Prizes as follows:

1<sup>st</sup> Place - \$250.00

2<sup>nd</sup> Place - \$100.00

3<sup>rd</sup> Place - \$50.00 (two prizes awarded)

Judging will take place January 30<sup>th</sup>, 1999 and prizes will be awarded on March 1<sup>st</sup>, 1999.

All tapes must be received before January 15<sup>th</sup> in order to be eligible for the cash prizes.

All tapes become property of DSI and entrance in this contest is considered authorization for DSI to use footage from your tape in creating a demonstration video.

*Win \$\$\$*

*Win \$\$\$*