

Network/Internet Communications Setup (For use with the TextPro Sr., ELITE2000 or ELITEGOLD)

Multiple Remote Communication Profiles

The DSI Software now allows multiple communications profiles to be used with the creation software. The remote communication profiles allow users to set up different profiles to be used to communicate with different display only locations. To set up a remote communication profile follow these directions.

✍ Click on the **Configuration** button from the Main Menu.

✍ Click on the **Communications** tab.

✍ There will be a blank profile name on the upper right side of the Communications settings. Enter in a short description of the profile that you are setting up. ie. “**Network Creation**”

✍ Select the **Com/Tapi** Option or the **TCP/IP** option. Com/Tapi is used for remote communications performed with a null modem cable,

a telephone modem or a direct connect parallel cable. The TCP/IP option is used for Network communications which will be describe more fully below.

✍ If you select the TCP/IP option you will have to select the TCP port.

✍ Start by using the default of 8110. If necessary, consult your network administrator for assistance in determining the TCP port.

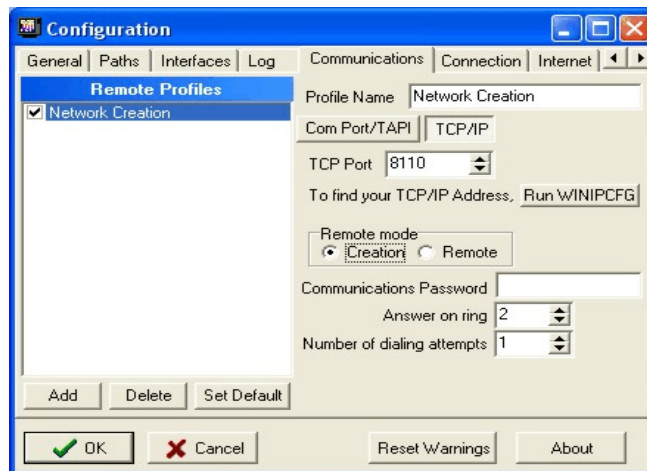
✍ Select the Creation mode under “Remote Mode”.

✍ Set the communications password if needed.

✍ The number of rings and number of dialing attempts are not needed for network communications.

✍ To add another remote communication profile, click on **Add** and follow the above steps.

✍ To use a specific remote communication profile as the default, click on the communications profile that you wish to use from the remote profiles listed on the left side and then click on **Set Default**.



Tips on Remote Communications Profiles

✍ To communicate consistently, static IP addresses are preferable for remote locations.

Enter a new remote unit in the Phone Database

To use the phone database follow these steps.

- ✍ Click on the **Phone Database** Button.

To add a new entry follow these steps.

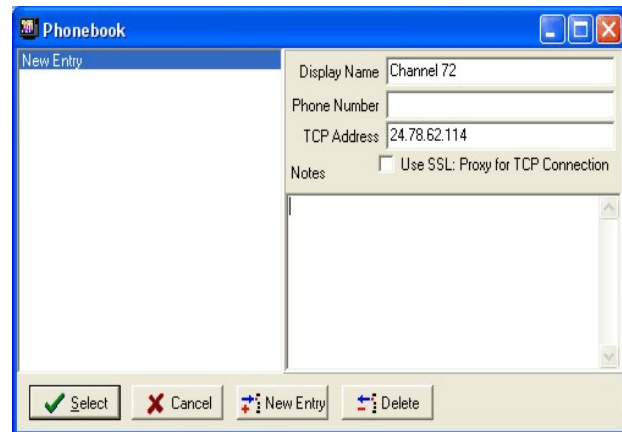
- ✍ Click on the **New Entry** button.

✍ Enter a Display Name for the new entry.

- ✍ Enter the TCP address. (You may be able to use the computer name instead of a TCP address).

To delete an existing entry follow these directions.

- ✍ Click on the entry you would like to delete.
- ✍ Click on the **Delete** button.
- ✍ A confirmation box will appear. Select **OK** if you want to delete the entry.



Online Button

To access a particular remote communication profile which was configured as described above, follow these steps.

- ✍ Left click on the **Online** Button. The various remote communication profiles will appear.
- ✍ Left click on the profile that you would like to use.
- ✍ Select the entry in the phone database that you would like to connect with and click on **Select**. If the entry that you want to connect with does not appear in the phonebook, you may add one at this time as described above.

Video Settings Check on Remote Communications

The new version of software will perform a video settings comparison between the creation and Display only software. This check occurs automatically and is transparent unless the video settings are different.

Online Communications Menu

Once you have established a connection to a remote computer, you will get a communications menu.

- ✍ To send a file or a schedule, click on Display Local Directory button.
- ✍ Click on the file that you wish to send, and then click on Open.

Recursive/Non Recursive Option

When transferring files from the creation system to the remote, you have the option to send recursively or non-recursively. Recursive sending of file involves checking any associated files with the schedule or page and sending them if necessary as well. Non-recursive sending only sends the selected file itself.