

Inserting Ads/Announcements on a LineUp Channel

Your new LineUp Program Guide & Character Generator is capable of displaying ½ screen advertisements/announcements while running the LineUp on-screen program guide on the other half of the screen. To do this, you will need to install the Limited Version (remote editing) software on a different computer (such as an office computer connected via a network) where all the creation and editing will take place. You will then transfer the data to the broadcast system running your channel.



Installing the Software for both Computers

- ☞ With your order, you will have received 2 software packages (in a DVD Case) titled Limited Version, and LineUp. Please, **do not plug in the green USB software activation key at this time.** This will happen on a later step. The Limited Version software will be installed on your office computer or a laptop. The LineUp will be installed on the computer that goes to the head-end (broadcast system).
- ☞ Install the DSI Character Generator Software first. Follow the on screen instructions. When complete, the USB device drivers will install (**do not plug in the USB software activation key at this time.**) Adobe Acrobat Reader will install; then the Borland Database will install (needed for all DSI products); then DirectX will install.
- ☞ Install the LineUp software on the 2nd system (*for the computer that goes into the head-end only*).
- ☞ Plug the USB software activation key into each of the computers (make sure that you plug in the correct key that came with the corresponding software). A 'New Hardware Found' wizard will appear. Click the 'No not at this time' option, click next, then click 'Automatically Install'. Click Finish

Configure the Head-end Computer running LineUp

- ☞ On the system running the LineUp Software, click on Start->Programs->LineUp->LineUp Client.
- ☞ You will notice a Client Icon on the Windows taskbar located close to the time display. Right Click on the icon and select Open.
- ☞ Make sure you have a check for each of these options: 'Automatically Load on Startup', 'Compress Response', and 'Enable GMT Processing.' Your full update will occur in a short time.
- ☞ Setup your Internet communications on the head-end computer. Double click on the DSI Software icon on your desktop. This will launch the DSI Software.
- ☞ From the DSI Main Menu, click on Configuration, then the Communications Tab.
- ☞ Type a Profile Name at the top right of the screen.
- ☞ Click on the TCP/IP button and verify that the port is set to 8110.
- ☞ Set the Remote Mode to Remote. Click OK till your at the Main Menu.



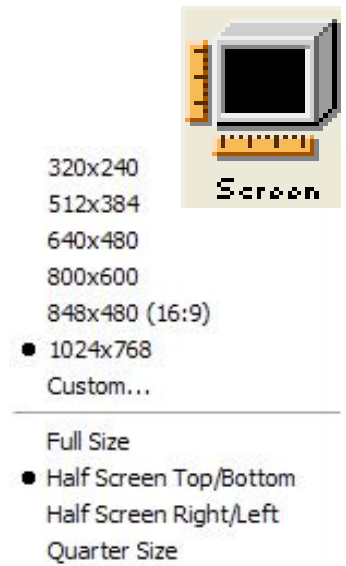
Configure the Office Editing System (Limited Version)

- ☞ Setup your Internet communications on the office computer (Limited Version). Double click on the DSI Software icon on your desktop. This will launch the DSI software.
- ☞ From the DSI Main Menu, click on Configuration, then the Communications Tab.
- ☞ Type a Profile Name at the top right of the screen.
- ☞ Click on the TCP/IP button and verify that the port is set to 8110.
- ☞ Set the Remote Mode to Creation. Click OK till your at the Main Menu.
- ☞ Test Communications. From the office computer (Limited Version) click the Phone Database button.
- ☞ Click on New Entry and replace the Name field with another name (eg. Channel xx). In the TCP line, type the IP address of the head-end computer (eg. 10.11.12.13) Click the top right X to close the Phone Database.

- ☞ Click the Online button. Highlight your entry and click Select. You should now be connected to the remote system (head-end computer). Click Disconnect.

Creating the Ads for the Top Half

- ☞ On the office computer, click on Text Editor from the DSI Main Menu.
- ☞ Click on New Page.
- ☞ Click the Screen button on the top toolbar.
- ☞ Select Half Screen Top/Bottom.
- ☞ Create your page in the existing space (please refer to the Character Generator Quick Start Manual page 7-10. Once completed, save your page.
- ☞ Click the Screen button again and select Full Screen. When prompted with the questions “Do you want to rescale all items on the page to the new size?”, **click No**. Your page is now set to half screen.
- ☞ Click on the Save Page button on the top toolbar.
- ☞ Click the Main Menu button.



Scheduling the New Ads

- ☞ Click on the Schedule Pages button from the Main Menu.
- ☞ Click on the New button.
- ☞ Click on the LineUp button on the top toolbar. Click OK to the message.
- ☞ Click on the + sign for the LineUp entry in the Schedule Data. Select the “Half Screen on Bottom” option. Click on OK. The LineUp thumbnail should be the first one in your schedule.
- ☞ Locate the ad (or page) that you created earlier, at the bottom of the screen. Right click on the thumbnail picture of the page (you can also drag & drop the page into the schedule). You will notice that you now have 2 entries in your schedule. For more detailed information on the Scheduler, please refer to pages 12-15 of the Character Generator Quick Start Manual.
- ☞ Click on the Save button and name your schedule.
- ☞ Click on the Main Menu button.



Sending your data to the LineUp System (broadcast channel)

- ☞ Click the On Line button on the DSI Main Menu. Select your entry and click on select.
- ☞ Once connected, click on the ‘Display Local Directory’.
- ☞ Browse for the Schedule file that you created earlier. Highlight the file and click on Open.
- ☞ When asked “Do you want to send all associated linked files and graphics?”, say **YES**.
- ☞ When the transfer is complete, click on Disconnect.

Setting the Default Schedule for the LineUp System (broadcast channel)

- ☞ On the head-end computer (system running LineUp), click on the Configuration button.
- ☞ On the General Tab, click the Browse button located beside the Master Schedule. Browse for the schedule file that you just sent. Click Open.
- ☞ The Master Schedule is the file that will run if the computer is re-booted. **Make sure that you always modify this schedule and send this schedule name across.**